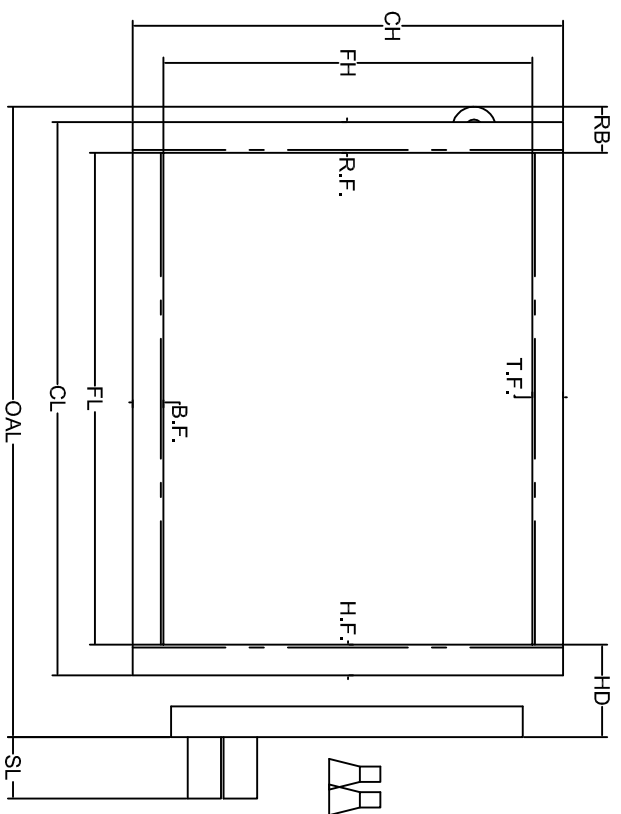
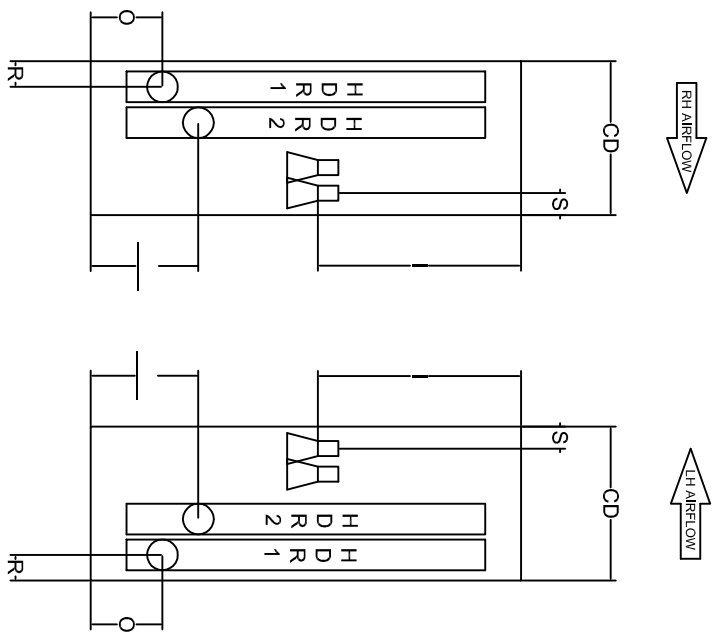


Coil Tube Face
Circuiting
Feeds
Pass



OVERSIZED HOLES REQUIRED



ROWS	FPI	FH	FL	CH	CL	CD	HD	OAL	SL	X	I	S	O	R	T.F.	B.F.	H.F.	R.F.	R.B.
------	-----	----	----	----	----	----	----	-----	----	---	---	---	---	---	------	------	------	------	------

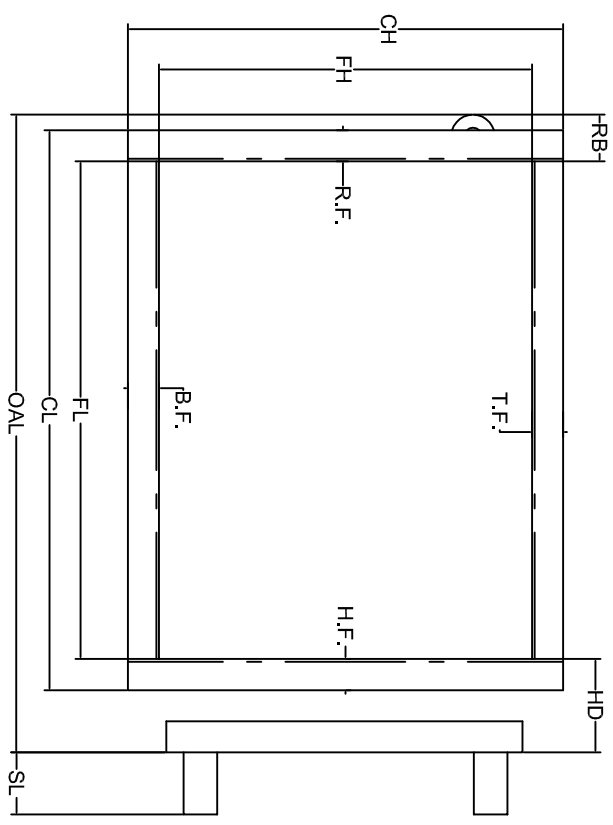
NOTES:

TAG COIL:

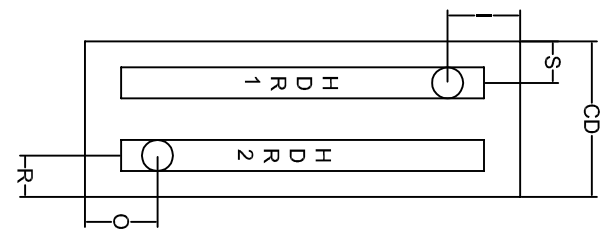
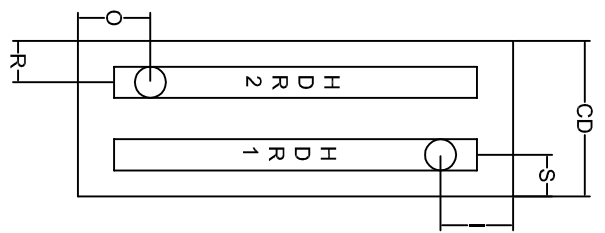
W.O.	Tube Supports Recommended For Coils Over 50.00" Long.
ITEM	
QTY.	All coils are tested with 550 p.s.i. Dry Nitrogen
REV	
MODEL #	

Tube Material	X	CU.
Fin Material	@	LG.
Casing Material		
Header Material And Size		
Supply Connection		
Return Connection		

Coil Tube Face
Circuiting
Feeds
Pass



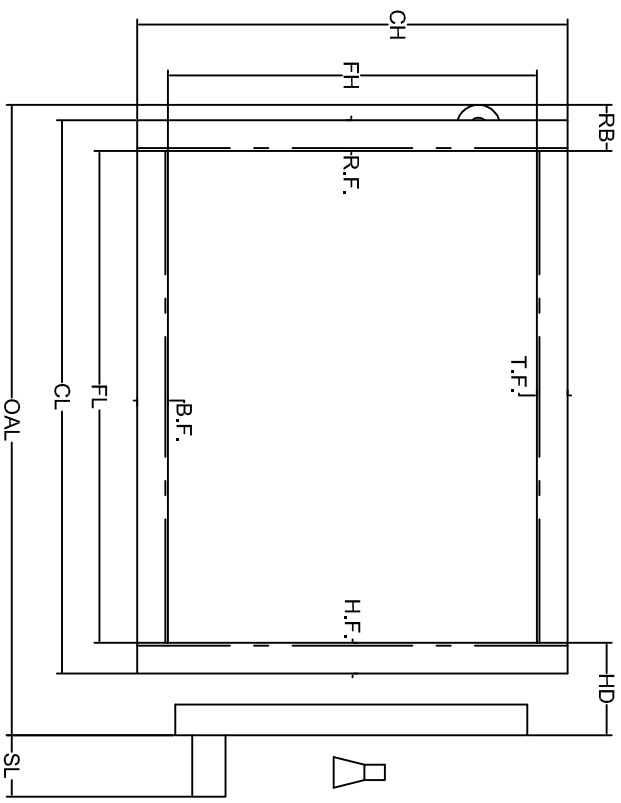
OVERSIZE HOLES REQUIRED



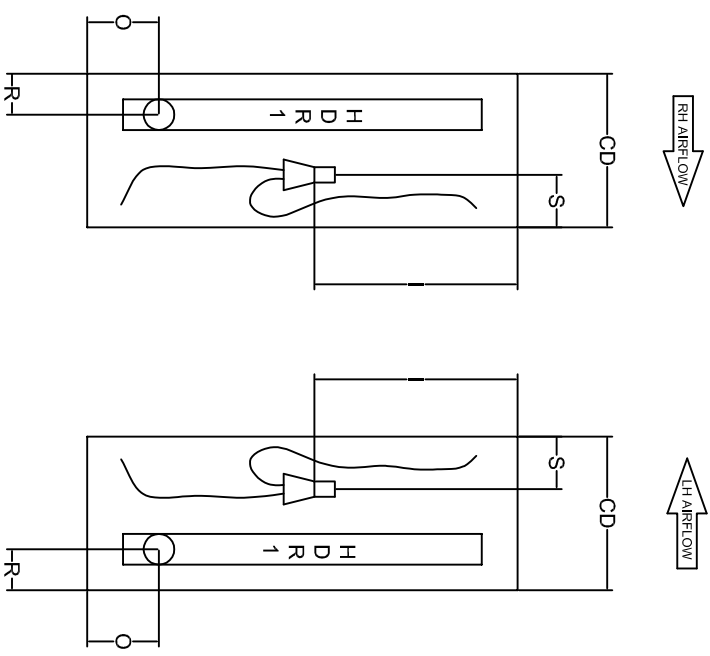
Tube Material	X	CU.
Fin Material	@	LG.
Casing Material		
Header Material And Size		
Supply Connection		
Return Connection		

ROWS	FPI	FH	FL	CH	CL	CD	HD	OAL	SL	X	I	S	O	R	T.F.	B.F.	H.F.	R.F.	R.B.
TAG COLL:										W.O.									
NOTES:										Tube Supports Recommended For Coils Over 50.00" Long.									
										All coils are tested with 550 p.s.i. Dry Nitrogen									
										MODEL #									

<b>Coil Tube Face</b>
<b>Circuiting</b>
_____ Feeds
_____ Pass



**OVERSIZED HOLES REQUIRED**



											<b>Tube Material</b>								
											X	CU.							
											@	LG.							
											<b>Fin Material</b>								
											<b>Casing Material</b>								
											<b>Header Material And Size</b>								
											<b>Supply Connection</b>								
											<b>Return Connection</b>								
ROWS	FPI	FH	FL	CH	CL	CD	HD	OAL	SL	X	I	S	O	R	T.F.	B.F.	H.F.	R.F.	R.B.

NOTES:

TAG COIL:

W.O.

ITEM

QTY.

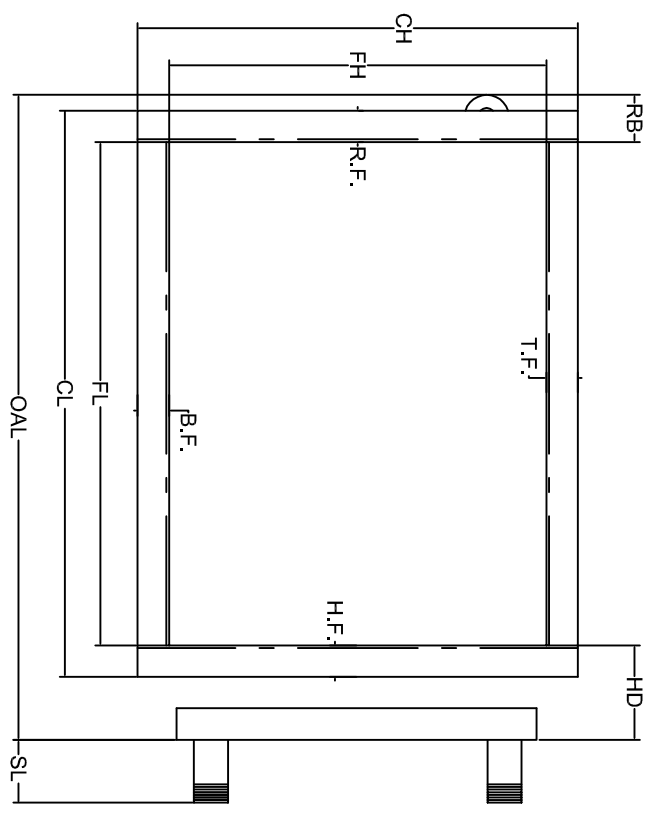
REV

MODEL #

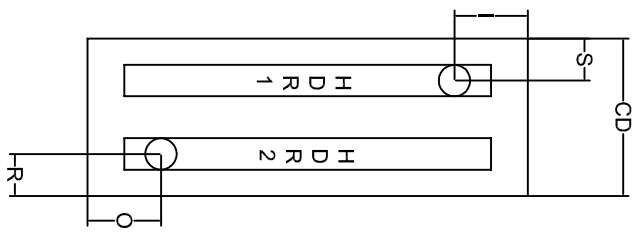
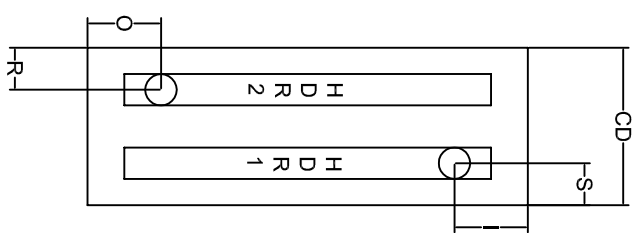
Tube Supports Recommended For Coils Over 50.00" Long.

All coils are tested with 550 p.s.i. Dry Nitrogen

Coil Tube Face
Circuiting
Feeds
Pass



**OVERSIZE HOLES REQUIRED**



ROWS	FPI	FH	FL	CH	CL	CD	HD	OAL	SL	X	I	S	O	R	T.F.	B.F.	H.F.	R.F.	R.B.
------	-----	----	----	----	----	----	----	-----	----	---	---	---	---	---	------	------	------	------	------

NOTES:

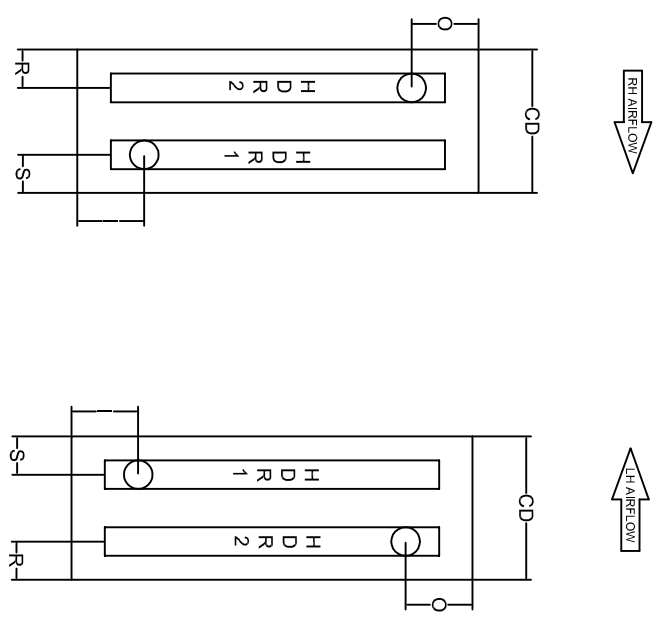
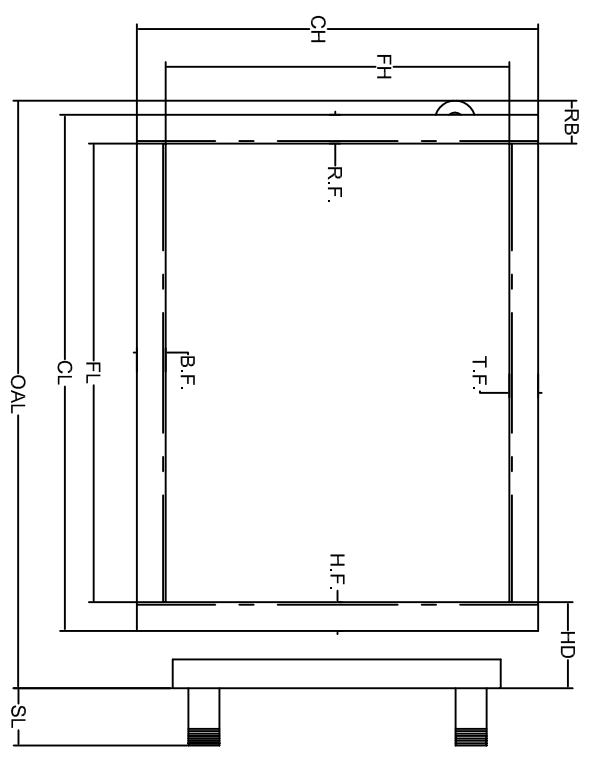
TAG COIL:

W.O. ITEM	Tube Supports Recommended For Coils Over 50.00" Long.
QTY.	All coils are tested with 550 p.s.i. Dry Nitrogen
REV	
MODEL #	

Steam Coils Supplied With .025 Wall Copper Standard

Tube Material	X	CU.
Fin Material	@	LG.
Casing Material		
Header Material And Size		
Supply Connection		
Return Connection		

<b>Coil Tube Face</b>
<b>Circuiting</b>
____ Feeds
____ Pass



<b>Tube Material</b>	X	CU.
<b>Fin Material</b>	@	LG.
<b>Casing Material</b>		
<b>Header Material And Size</b>		
<b>Supply Connection</b>		
<b>Return Connection</b>		
Please Specify Vent and Drain Arrangement on End View.		

ROWS	FPI	FH	FL	CH	CL	CD	HD	OAL	SL	X	I	S	O	R	T.F.	B.F.	H.F.	R.F.	R.B.
------	-----	----	----	----	----	----	----	-----	----	---	---	---	---	---	------	------	------	------	------

NOTES:

TAG COIL:

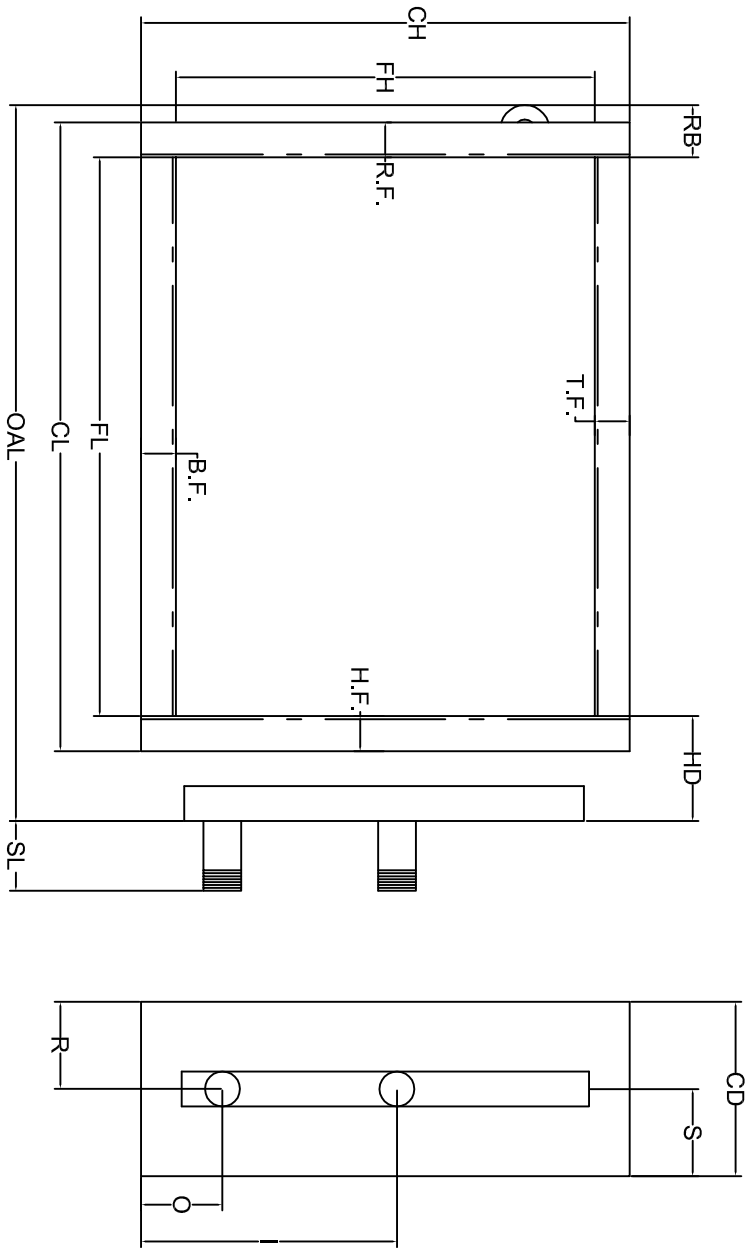
W.O.  
ITEM  
QTY.  
REV

Tube Supports Recommended For Coils Over 50.00" Long.

All coils are tested with 550 p.s.i. Dry Nitrogen

MODEL #

<b>Coil Tube Face</b>
<b>Circuiting</b>
<input type="checkbox"/> Feeds <input type="checkbox"/> Pass



**OVERSIZE HOLES REQUIRED**

ROWS	FPI	FH	FL	CH	CL	CD	HD	OAL	SL	X	I	S	O	R	T.F.	B.F.	H.F.	R.F.	R.B.
------	-----	----	----	----	----	----	----	-----	----	---	---	---	---	---	------	------	------	------	------

NOTES:

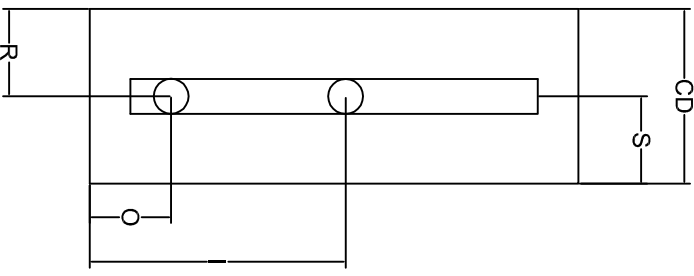
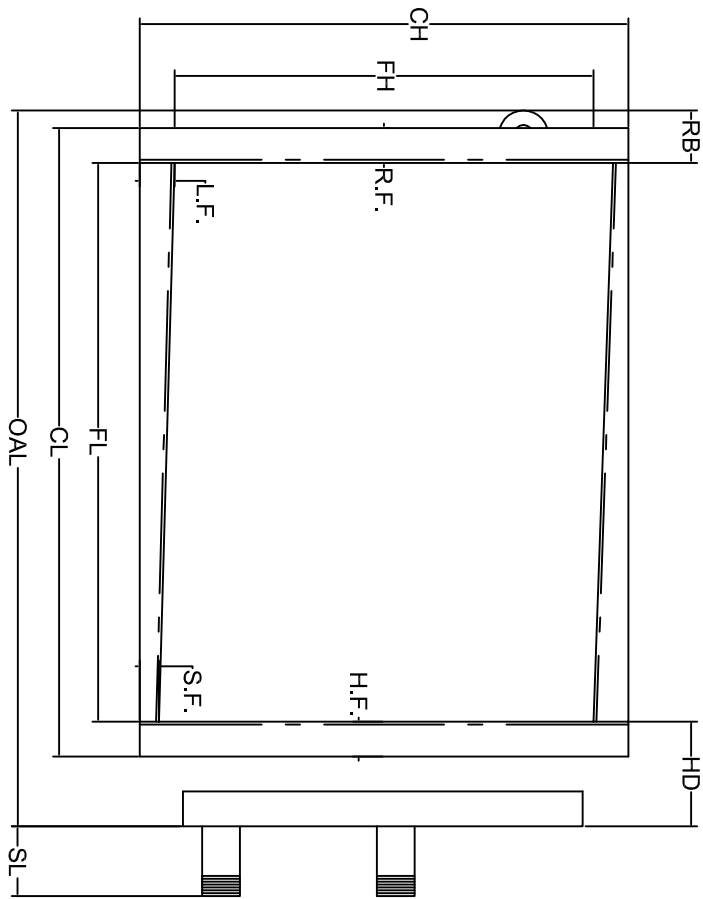
TAG COIL:

W.O. ITEM	Tube Supports Recommended For Coils Over 50.00" Long.
QTY.	
REV	All coils are tested with 550 p.s.i. Dry Nitrogen
MODEL #	

<b>Tube Material</b>	X	CU.
<b>Fin Material</b>	@	LG.
<b>Casting Material</b>		
<b>Header Material And Size</b>		
<b>Supply Connection</b>		
<b>Return Connection</b>		

Steam Coils Supplied With .025 Wall Copper Standard

Coil Tube Face
Circuiting
Feeds
Pass



**OVERSIZE HOLES REQUIRED**

ROWS	FPI	FH	FL	CH	CL	CD	HD	OAL	SL	X	I	S	O	R	T.F.	B.F.	H.F.	R.F.	R.B.
------	-----	----	----	----	----	----	----	-----	----	---	---	---	---	---	------	------	------	------	------

NOTES:

TAG COIL:

W.O. ITEM	QTY.	REV	MODEL #
Tube Supports Recommended For Coils Over 50.00" Long.			
All coils are tested with 550 p.s.i. Dry Nitrogen			

Steam Coils Supplied With .025 Wall Copper Standard Coils Should Be Pitched 1/8" Per Foot of Fin Length

Tube Material	X	CU.
Fin Material	@	LG.
Casing Material		
Header Material And Size		
Supply Connection		
Return Connection		