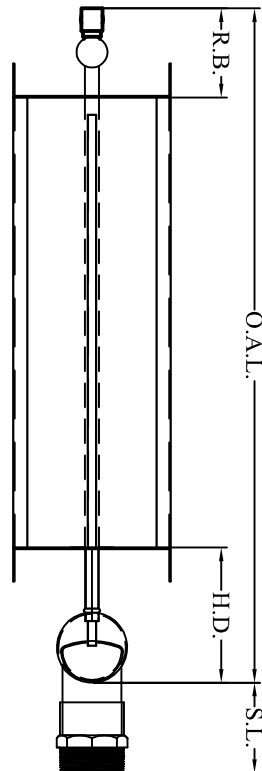
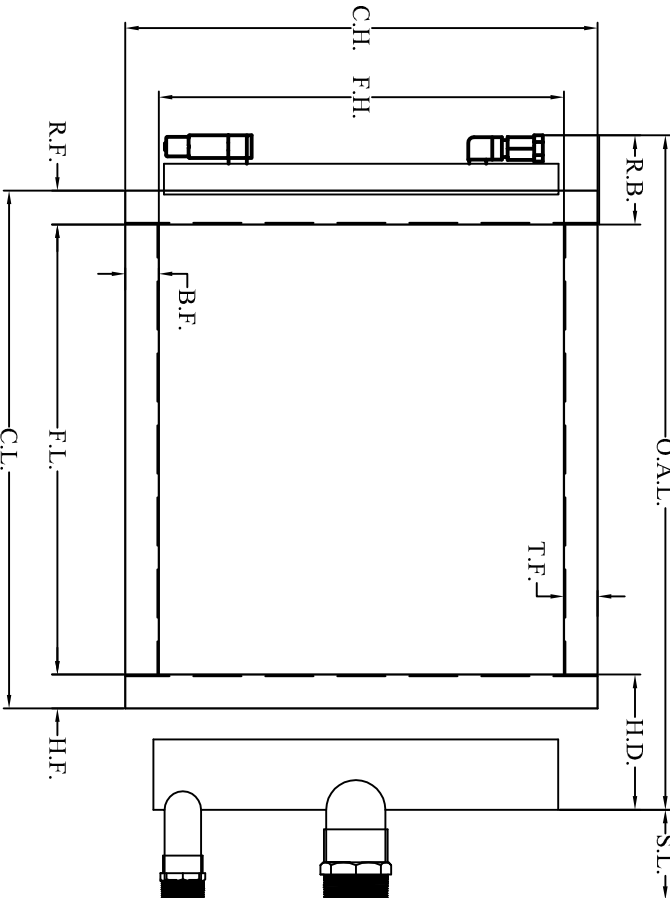


Steam Dist. Coil with Freeze Block and Vacuum Breaker

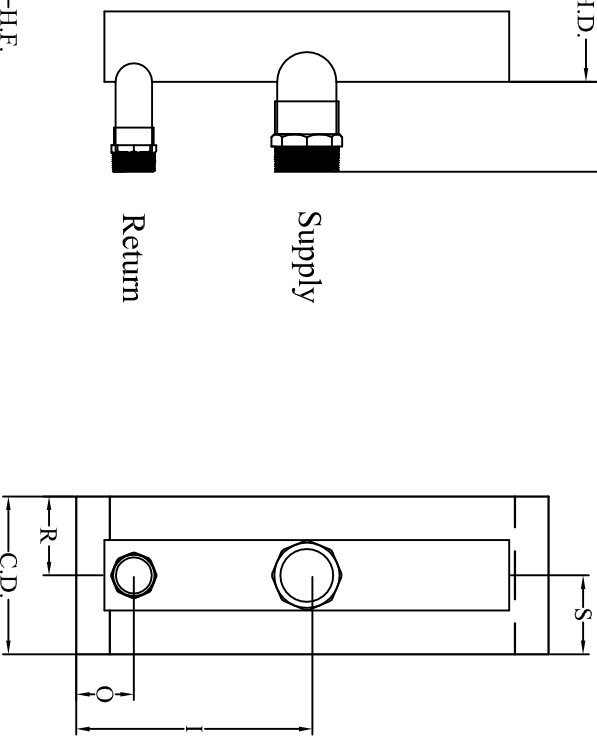
Top View



Front View



Side View



Oversized Holes Required

Coil Tube Face	Steam Dist. Coil with Freeze Block and Vacuum Breaker												Tube Material	
Circuiting	Top View												X CU.	
# Feeds # Pass	Front View												@ LG.	
# Drop Tubes	Side View												Fin Material	
														Casing Material
														Fin Style
														Header Material
														Supply Connection
														Return Connection
														Supply Adapters
														Return Adapters

NOTES: Max RB. 3.9" for 1" SD Coils

TAG COIL:

W.O. _____
ITEM _____
QTY. _____
REV _____
MODEL # _____

Tube Supports Recommended
For Coils Over 50.00" Long.
p.s.i. Dry Nitrogen

ALL DIMENSIONS ARE IN INCHES.
REFER TO DOCUMENT ES-2 FOR
MODEL NUMBER INFORMATION.



Drawn By:
J. McClain