

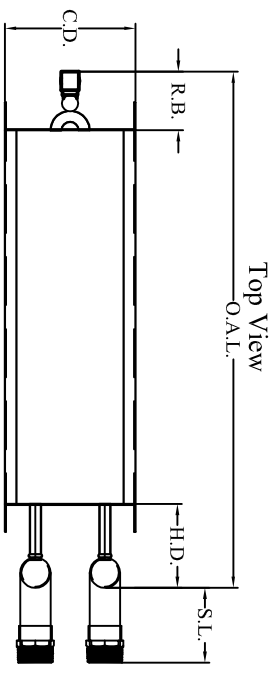
Coil Tube Face

Circuiting

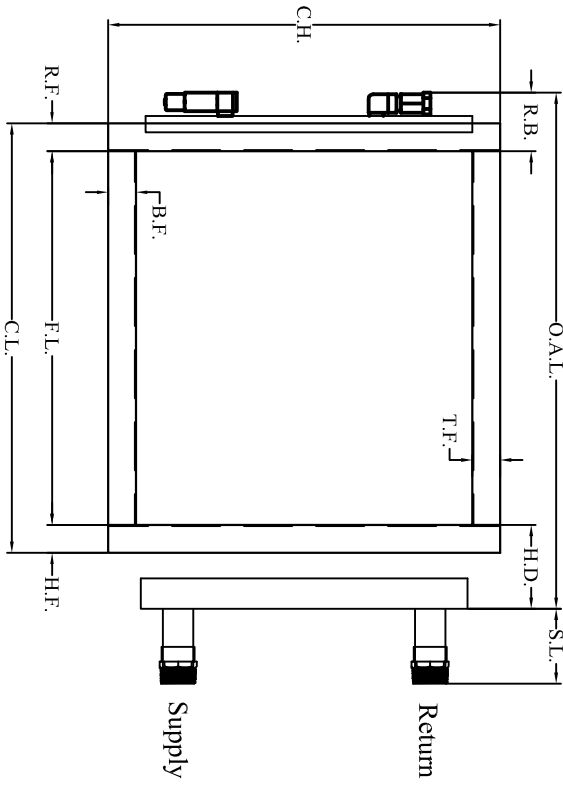
Feeds
Pass

Drop Tubes

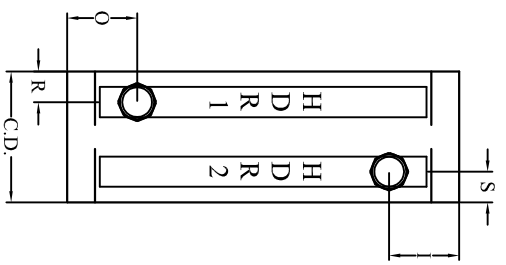
Standard Steam Coil with Freeze Block and Vacuum Breaker



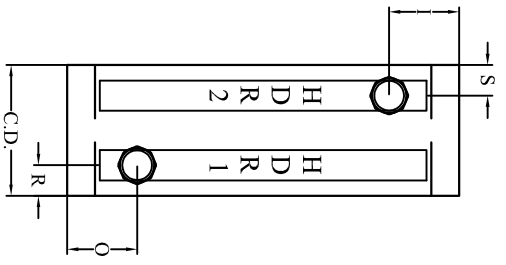
Top View



Front View



Side View



Side View

Tube Material

X CU.

@ LG.

Fin Material

Casing Material

Fin Style

Header Material

Supply Connection

Return Connection

Supply Adapters

Return Adapters

ROWS	FPI	FH	FL	CH	CL	CD	HD	OAL	SL	X	I	S	O	R	T.F.	B.F.	H.F.	R.F.	R.B.		
TAG COIL:																					
W.O.																					
ITEM																					
QTY.																					
REV																					
MODEL #																					

NOTES: SS Coils Max RB = 3.26"

Tube Supports Recommended For Coils Over 50.00" Long.

All coils are tested with 550 p.s.i. Dry Nitrogen

ALL DIMENSIONS ARE IN INCHES. REFER TO DOCUMENT ES-2 FOR MODEL NUMBER INFORMATION.