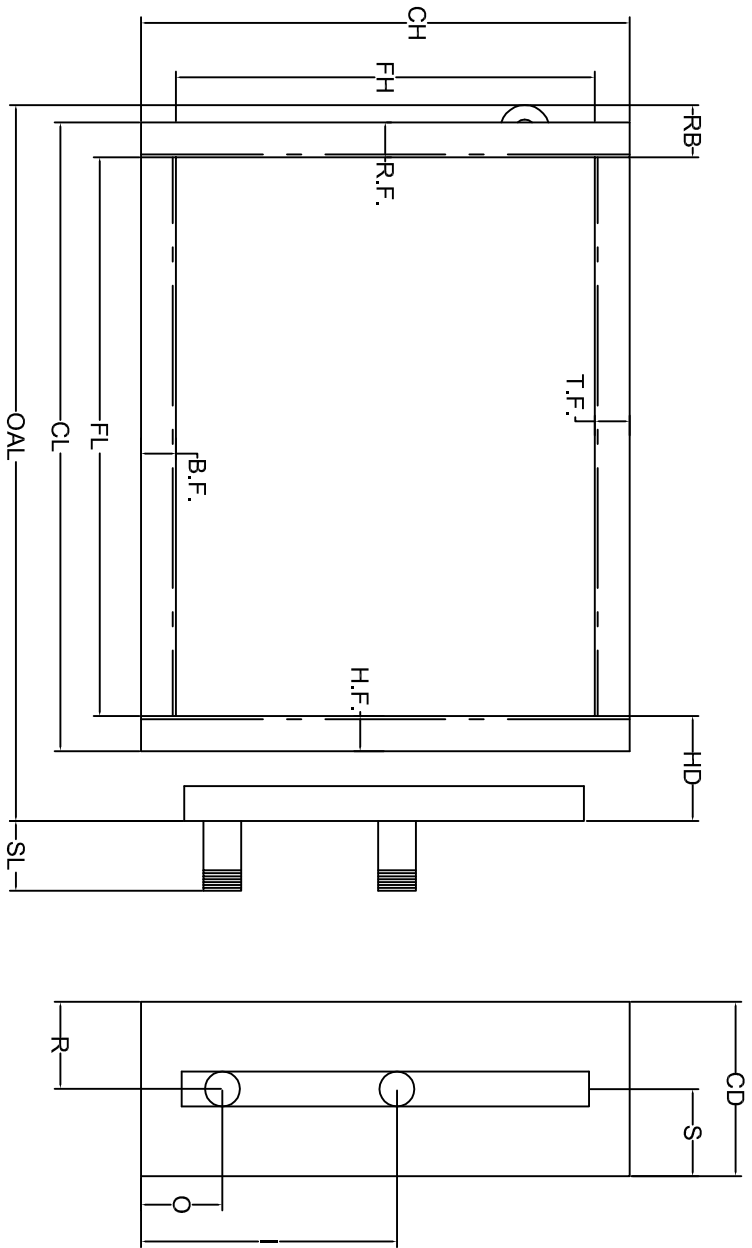


<b>Coil Tube Face</b>
<b>Circuiting</b>
_____ Feeds
_____ Pass



**OVERSIZE HOLES REQUIRED**

ROWS	FPI	FH	FL	CH	CL	CD	HD	OAL	SL	X	I	S	O	R	T.F.	B.F.	H.F.	R.F.	R.B.
------	-----	----	----	----	----	----	----	-----	----	---	---	---	---	---	------	------	------	------	------

NOTES:

TAG COIL:

W.O. _____	Tube Supports Recommended For Coils Over 50.00" Long.
ITEM _____	
QTY. _____	
REV _____	
MODEL # _____	All coils are tested with 550 p.s.i. Dry Nitrogen

<b>Tube Material</b>	X	CU.
<b>Fin Material</b>	@	LG.
<b>Casting Material</b>		
<b>Header Material And Size</b>		
<b>Supply Connection</b>		
<b>Return Connection</b>		

Steam Coils Supplied With  
.023 Wall Copper Standard