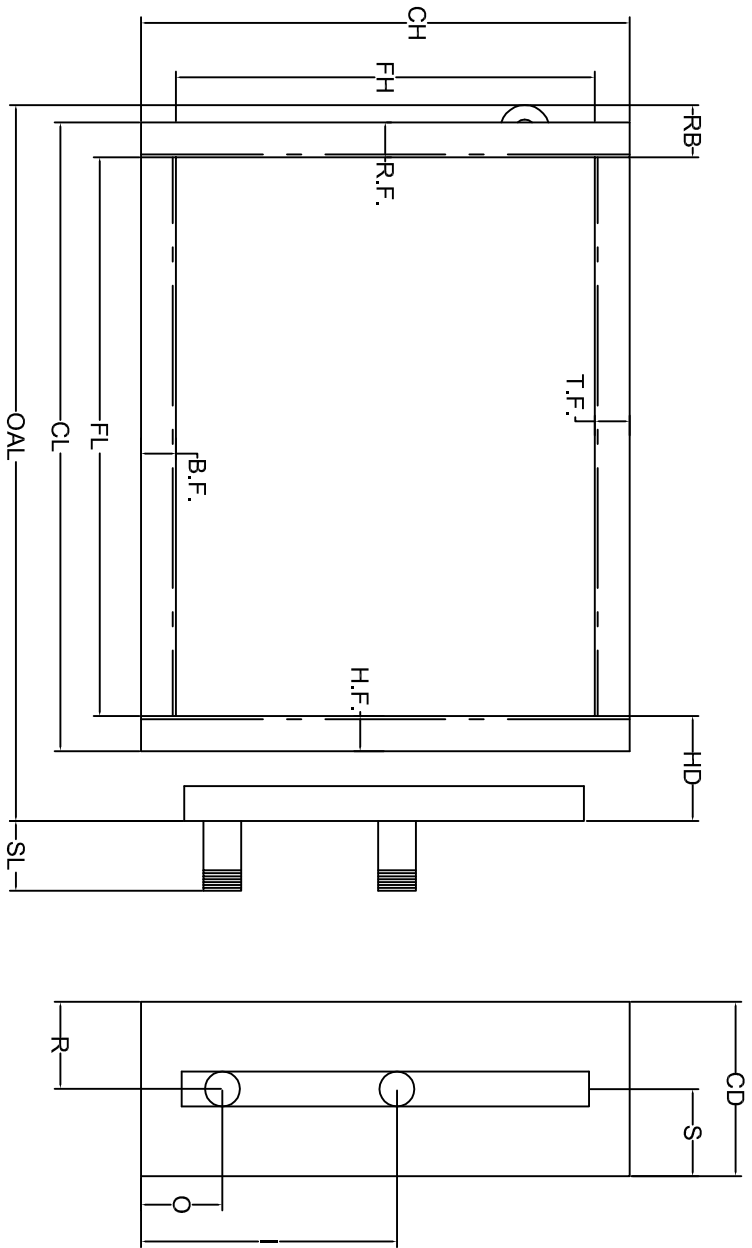


Coil Tube Face
Circuiting
<input type="checkbox"/> Feeds <input type="checkbox"/> Pass



OVERSIZE HOLES REQUIRED

ROWS	FPI	FH	FL	CH	CL	CD	HD	OAL	SL	X	I	S	O	R	T.F.	B.F.	H.F.	R.F.	R.B.
------	-----	----	----	----	----	----	----	-----	----	---	---	---	---	---	------	------	------	------	------

NOTES:

TAG COIL:

W.O. ITEM	Tube Supports Recommended For Coils Over 50.00" Long.
QTY.	
REV	All coils are tested with 550 p.s.i. Dry Nitrogen
MODEL #	

Tube Material	X CU.
Fin Material	@ LG.
Casting Material	
Header Material And Size	
Supply Connection	
Return Connection	

Steam Coils Supplied With .025 Wall Copper Standard