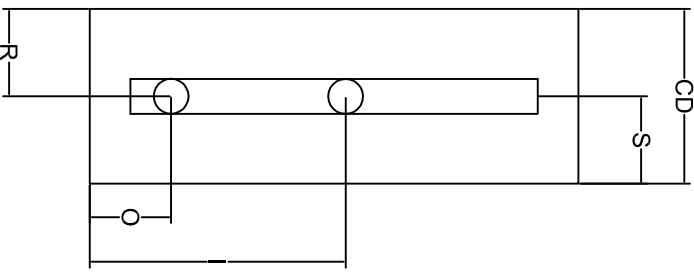
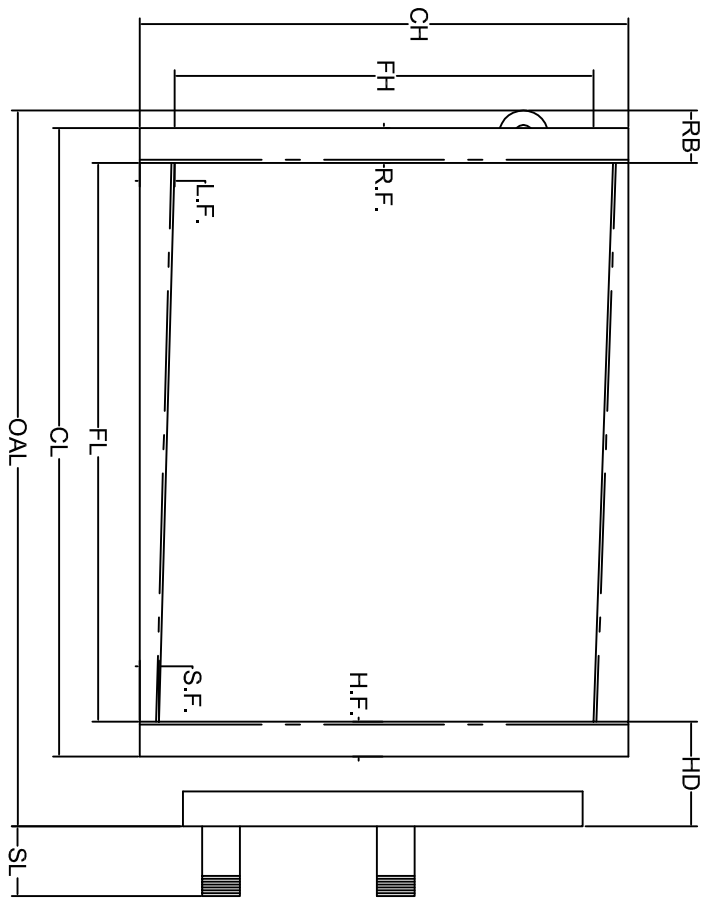


Coil Tube Face
Circuiting
Feeds
Pass



OVERSIZE HOLES REQUIRED

ROWS	FPI	FH	FL	CH	CL	CD	HD	OAL	SL	X	I	S	O	R	T.F.	B.F.	H.F.	R.F.	R.B.
------	-----	----	----	----	----	----	----	-----	----	---	---	---	---	---	------	------	------	------	------

NOTES:

TAG COIL:

W.O. ITEM	Tube Supports Recommended For Coils Over 50.00" Long.
QTY.	
REV	All coils are tested with 550 p.s.i. Dry Nitrogen
MODEL #	

Steam Coils Supplied With .025 Wall Copper Standard Coils Should Be Pitched 1/8" Per Foot of Fin Length

Tube Material	X	CU.
Fin Material	@	LG.
Casing Material		
Header Material And Size		
Supply Connection		
Return Connection		