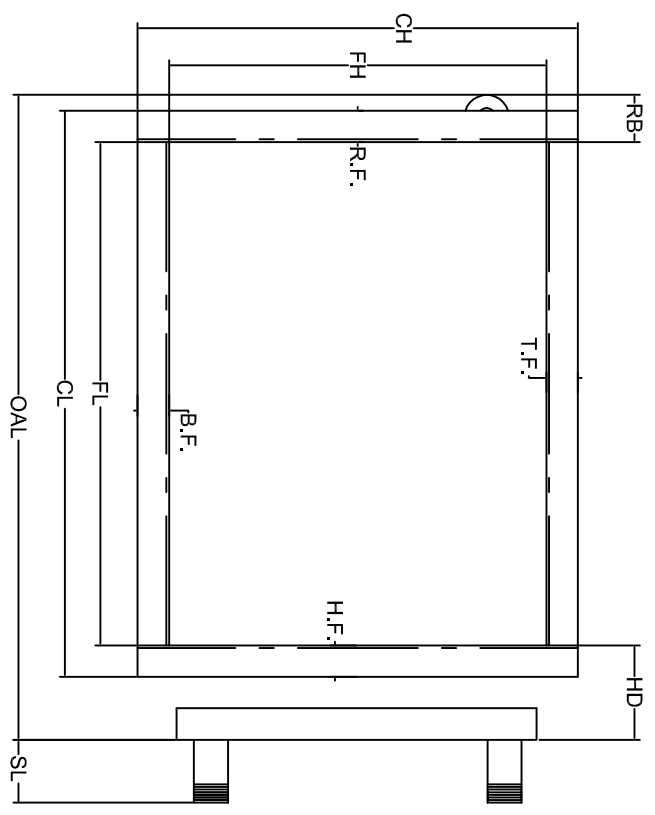
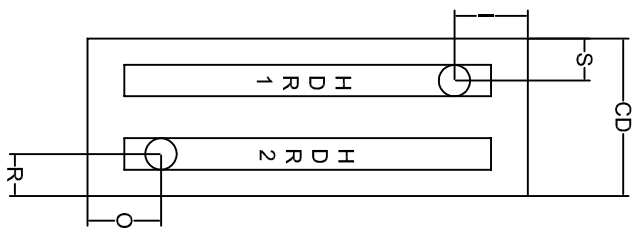
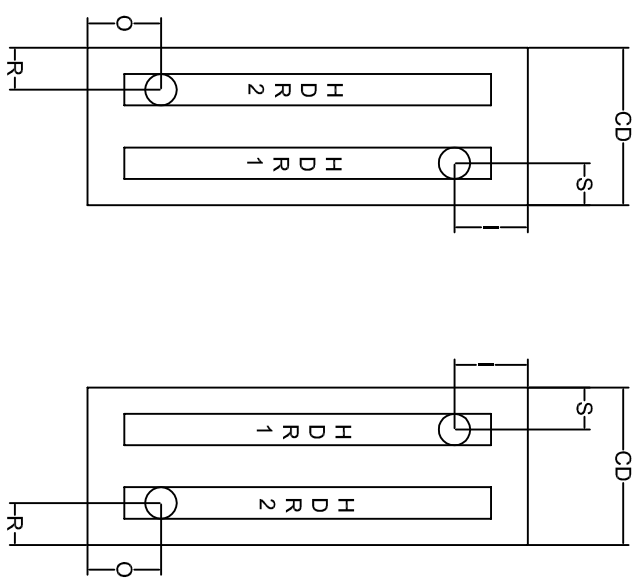


Coil Tube Face
Circuiting
Feeds
Pass



**OVERSIZE HOLES REQUIRED**



Tube Material	X	CU.
Fin Material	@	LG.
Casing Material		
Header Material And Size		
Supply Connection		
Return Connection		
Steam Cables Supplied With .025 Wall Copper Standard		
ROWS	FPI	FH
	FL	CH
	CL	CD
	HD	OAL
	SL	X
	I	S
	O	R
	T.F.	B.F.
	H.F.	R.F.
	R.B.	

NOTES:

TAG COIL:

W.O.

ITEM

QTY.

REV

MODEL #

Tube Supports Recommended For Coils Over 50.00" Long.

All coils are tested with 550 p.s.i. Dry Nitrogen